

GENERAL NOTES:

1. CONTRACTOR SHALL MAKE A SITE VISIT PRIOR TO BIDDING TO EXAMINE EXISTING CONDITIONS FOR THEMSELVES. CONTRACTOR TO FAMILIARIZE THEMSELVES W/ DESIGN DOCUMENTS NOTES & DETAILS AND THE MASSACHUSETTS DEPARTMENT OF PUBLIC WORKS STANDARD SPECIFICATIONS FOR HIGHWAYS AND BRIDGES, CURRENT EDITION.
2. CONTRACTOR SHALL NOTIFY / COORDINATE WITH THE TOWN OF GROTON, PRIOR TO PLANT MATERIAL INSTALLATION.
3. CONTRACTOR SHALL COORDINATE WITH THE TOWN OF GROTON.
4. PRIOR TO THE PRE-CONSTRUCTION MEETING THE CONTRACTOR SHALL CONTACT DIG SAFE ☎ 1-888-344-7233 TO HAVE THE EXISTING UTILITIES MARKED.
5. All contractors shall inspect site prior to bidding to verify existing conditions for themselves.
6. The Contractor shall supply all plant material in quantities sufficient to complete the planting shown on the drawings. See specification.
7. All plant material shall conform to the guidelines established by "The American Standard for Nursery Stock", published by the American Association of Nurserymen, Inc. ANSI Z60.1-Current Edition.
8. All plants to be balled in burlap or container grown. No plastic burlap.
9. All plants to be approved by the Landscape Architect.
10. Stake location of all proposed plant material for approval of Landscape Architect prior to commencement of planting.
11. The landscape contractor shall guarantee all plant materials for one (1) full year from date of acceptance.
12. Heal all construction scars with naturalized grass, lawn or mulch as indicated by drawings and/or as directed by Landscape Architect.
13. "Dry Roots" shall be added to all new tree planting pits. All new loam shall be tested and amended as stated in the loam report. Provided by loam supplier.
14. Landscape Contractor shall submit a watering schedule program for the (60) day maintenance period for review by the Landscape Architect & to Owner for all proposed plant material.
15. Protect existing plant material within construction limits. Provide watering program for all proposed plant material during construction.
16. Substitutions allowable per seasonal needs.

**FOR LANDSCAPE DETAILS
SEE SHEET L2**

GRAPHIC LEGEND

- PROTECT EXISTING TREELINE / VEGETATION TO REMAIN, TYP.
- EVERGREEN TREES (DRIP OR MIST HEAD IRRIGATION)
- DECIDUOUS SHADE TREES (DRIP OR MIST HEAD IRRIGATION)
- ORNAMENTAL & FLOWERING TREES (DRIP OR MIST HEAD IRRIGATION)
- EVERGREEN SHRUBS (DRIP OR MIST HEAD IRRIGATION)
- DECIDUOUS SHRUBS (DRIP OR MIST HEAD IRRIGATION)
- PERENNIALS (DRIP OR MIST HEAD IRRIGATION)
- SEEDED LAWN (SPRAY-HEAD IRRIGATION)
- NATURALIZED HYDRO-SEEDED SLOPE MIX (NO IRRIGATION)
- NEW ENGLAND EROSION CONTROL / RESTORATION MIX (FOR DETENTION BASINS AND MOIST SITES) (NO IRRIGATION)
- SPLIT RAIL FENCE W/ (3) RAILS
- PROPOSED POST AND RAIL FENCE

LANDSCAPE NOTES:

LAWN GRASS
(PACIFIC NORTHWEST SEED, LTD. WILMINGTON, MA.)
LANDSCAPE/UTILITY MIXTURE FOR SUN/SHADE:
40% ENCHANTED PERENNIAL RYEGRASS
40% CREEPING RED FESCUE
20% GOLDENROD KENTUCKY BLUEGRASS

NATURALIZED GRASS SEED
(PACIFIC NORTHWEST SEED, LTD. WILMINGTON, MA.)
NATURALIZED GRASS SEED:

	PROPORTION	MINIMUM	MINIMUM
	BY WEIGHT LBS	PURITY %	GERMINATIONS
CREEPING RED FESCUE	50	85	95
KENTUCKY 31	5	85	95
DOMESTIC RYE	10	90	98
RED TOP	5	85	92
LADINO CLOVER	5	85	96

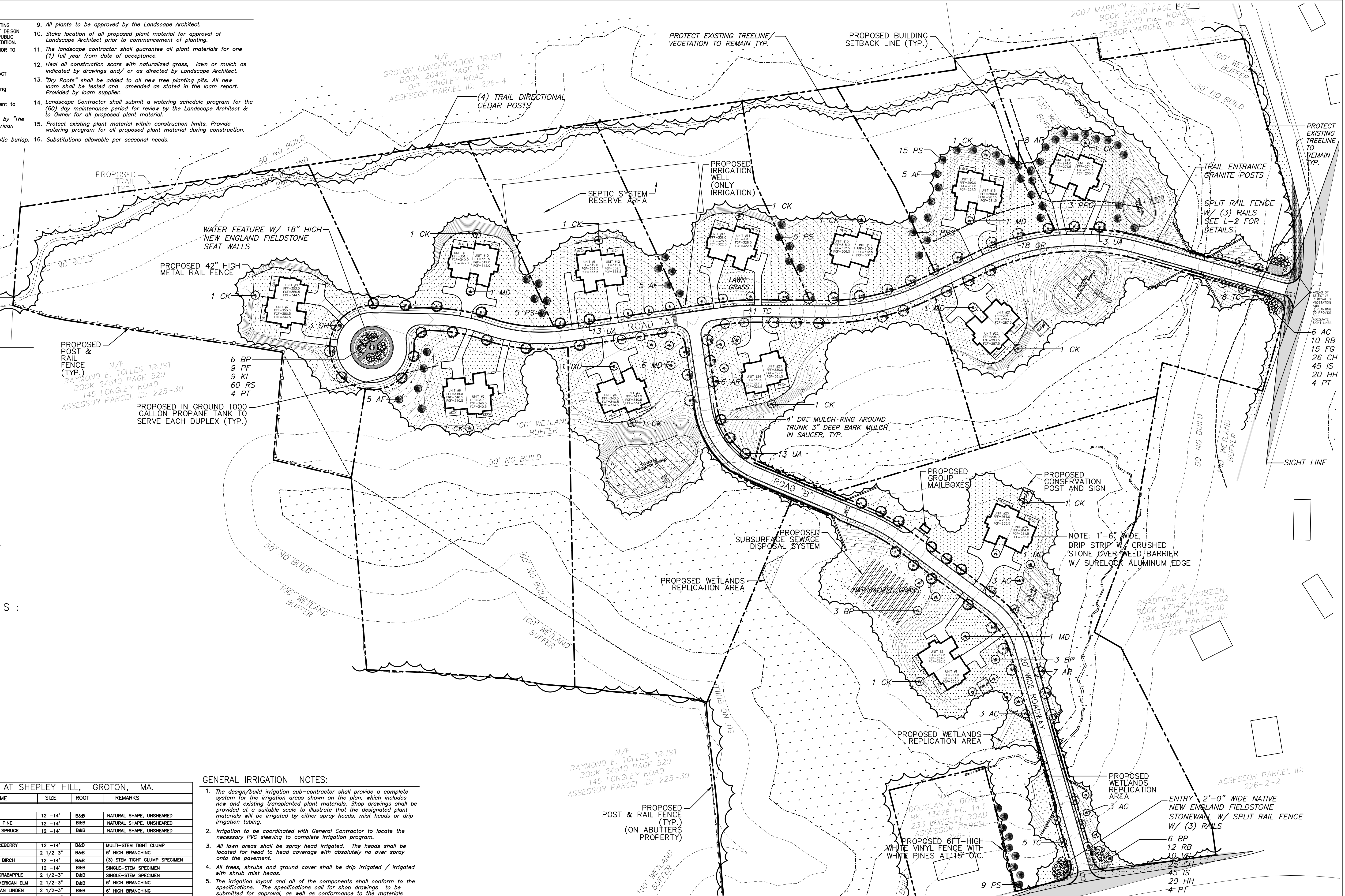
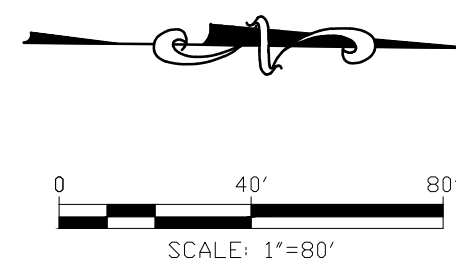
N.E. EROSION CONTROL / RESTORATION GRASS (NEECR)
(NEW ENGLAND WETLAND PLANTS, INC. AMHERST, MA.)
NEW ENGLAND EROSION CONTROL / RESTORATION MIX (FOR DETENTION BASINS & MOIST SITES):
UPLAND BENTGRASS, CREEPING BENTGRASS, BIG BLUESTEM, FOX SEDGE, CANADA WILD RYE, VIRGINIA WILD RYE, CREEPING RED FESCUE, SOFT RUSH, SWITCHGRASS, LITTLE BLUESTEM, GREEN BULRUSH, NEW ENGLAND ASTER, SPOTTED JOE-PYE WEED, BLUEVEERWAIN.

PLANT MATERIAL LIST -- THE VILLAGE AT SHEPLEY HILL, GROTON, MA.

SYM.	QTY.	BOTANICAL NAME	COMMON NAME	SIZE	ROOT	REMARKS
EVERGREEN TREES						
AF	23	ABIES FRASERI	FRASER FIR	12 - 14'	B&B	NATURAL SHAPE, UNSHEARED
PS	24	PINUS STROBUS 'FASTIGIATA'	FASTIGIATE WHITE PINE	12 - 14'	B&B	NATURAL SHAPE, UNSHEARED
PPG	6	PICEA PUNGENS 'GLAUCA'	COLORADO BLUE SPRUCE	12 - 14'	B&B	NATURAL SHAPE, UNSHEARED
DECIDUOUS AND ORNAMENTAL TREES						
AC	15	AMELANCHIER CANADENSIS	SHADBLOW SERVICEBERRY	12 - 14'	B&B	MULTI-STEM TIGHT CLUMP
ME	13	ACER RUBRUM	RED MAPLE	2 1/2 - 3"	B&B	6" HIGH BRANCHING
BP	18	BETULA POPULIFOLIA 'WHITESPIRE'	WHITESPIRE GREY BIRCH	12 - 14'	B&B	(3) STEM TIGHT CLUMP SPECIMEN
CK	12	CORNUS KOUSA	KOUSA DOGWOOD	12 - 14'	B&B	SINGLE-STEM SPECIMEN
MD	12	MALUS 'DONALD WYMAN'	DONALD WYMAN CRABAPPLE	2 1/2 - 3"	B&B	SINGLE-STEM SPECIMEN
UA	29	ULMUS AMERICANA 'VALLEY FORGE'	VALLEY FORGE AMERICAN ELM	2 1/2 - 3"	B&B	6" HIGH BRANCHING
TC	22	TILIA AMERICANA 'REDMOND'	REDMOND AMERICAN LINDEN	2 1/2 - 3"	B&B	6" HIGH BRANCHING
QR	21	QUERCUS RUBRA	RED OAK	2 1/2 - 3"	B&B	6" HIGH BRANCHING
SHRUBS						
FG	15	FOTHERGILLIA GARDENII	DWARF FOTHERGILLA	2 - 2 1/2'	B&B	
RB	22	RHOODODENDRON 'BOULE DE NIDDE'	BOULE DE NIDDE RHOODODENDRON	2 - 2 1/2'	B&B	
CH	51	CEPHALOTAXUS HARRINGTONIA 'PROSTRATA'	CREEPING JAPANESE PLUM YEW	2 - 2 1/2'	B&B	
VC	10	VIBURNUM CARLESI	KOREANSPICE VIBURNUM	2 - 2 1/2'	B&B	
RS	60	RHOODODENDRON 'SCINTILLATION'	SCINTILLATION RHOODODENDRON	2 - 2 1/2'	B&B	
PF	9	PIERIS FLORIBUNDA	MOUNTAIN ANDROMEDA	2 - 2 1/2'	B&B	
KL	9	KALMIA LATIFOLIA	MOUNTAIN LAUREL	2 - 2 1/2'	B&B	
PERENNIALS, GROUNDCOVER AND GRASSES						
HH	40	HEMEROCALLIS 'HAPPY RETURNS'	HAPPY RETURNS DAYLILIES	1 GAL	GAL	YELLOW
IS	90	IRIS SIBERICA 'CAESAR'S BROTHER'	CAESAR'S BROTHERS IRIS	1 GAL	GAL	PURPLE
PT	12	PACHYSANDRA TERMINALIS	PACHYSANDRA	FLAT	FLAT	(50) INDIVIDUAL PLANTS PER FLAT

GENERAL IRRIGATION NOTES:

1. The design/build irrigation sub-contractor shall provide a complete system for the irrigation areas shown on the plan, which includes new and existing transplanted plant materials. Shop drawings shall be provided at a suitable scale to illustrate that the designated plant materials will be irrigated by either spray heads, mist heads or drip irrigation tubing.
2. Irrigation to be coordinated with General Contractor to locate the necessary PVC sleeving to complete irrigation program.
3. All lawn areas shall be spray head irrigated. The heads shall be located for head to head coverage with absolutely no over spray onto the pavement.
4. All trees, shrubs and ground cover shall be drip irrigated / irrigated with shrub mist heads.
5. The irrigation layout and all of the components shall conform to the specifications. The specifications call for shop drawings to be submitted for approval, as well as conformance to the materials specified.
6. The Contractor shall be extremely careful during the installation process not to disturb new or existing plant materials. The Contractor is to coordinate his work with other sub-contractors. Sleeving under pavements must be available and in the proper location prior to paving.
7. The Irrigation Contractor shall conform to any local codes or ordinances that may be required to complete the work.
8. This irrigation alternate shall include the cost of connecting to either the building water mains down stream of the back flow preventer of the irrigation well.
9. The irrigation contractor shall test water source for water quality including minerals that may cause staining of concrete and granite pavement and curbs.
10. Irrigation Contractor shall coordinate with the Town of Groton for irrigation requirements prior to shop drawing preparation.



LANDSCAPE ARCHITECT
WILLIAM FLEMING ASSOCIATES
INCORPORATED
LANDSCAPE ARCHITECTURE
PLANNING

375 MAIN ST.
SUITE 403
STONERHAM, MA. 02186
TEL: 438-3088
F: 438-3631
W: www.williamfleming.com

REV	DATE	DESCRIPTION	BY	APP.
4	02/04/21	ISSUED FOR REVIEW	WFF	WFF
3	01/28/21	ISSUED FOR REVIEW	WFF	WFF
2	01/12/21	ISSUED FOR REVIEW	WFF	WFF
1	11/30/20	ISSUED FOR REVIEW	WFF	WFF

LANDSCAPE PLAN

THE VILLAGE AT SHEPLEY HILL
GROTON, MASSACHUSETTS

**SHEPLEY HILL
CAPITAL PARTNERS LLC**

SCALE: 1" = 80'
DATE: NOV. 20, 2020
DRAWN BY: WFA
DESIGNED BY: WFA
CHECKED BY: WFA
APPROVED BY: WFA

PROJECT NO. 2044

L-1